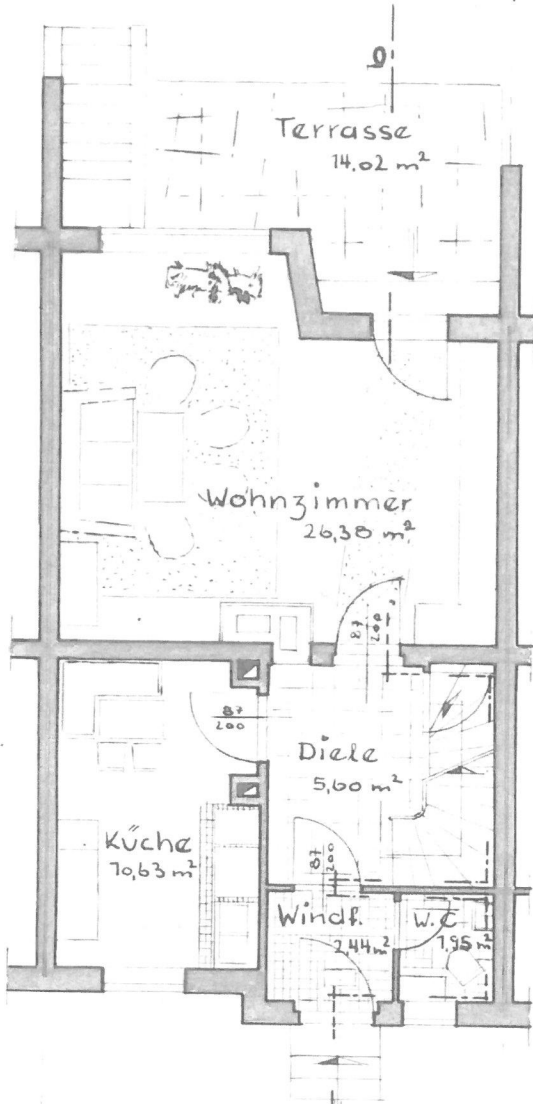
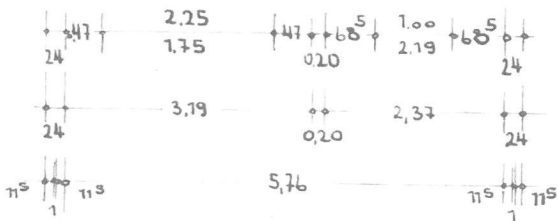
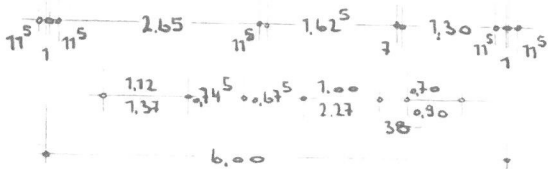


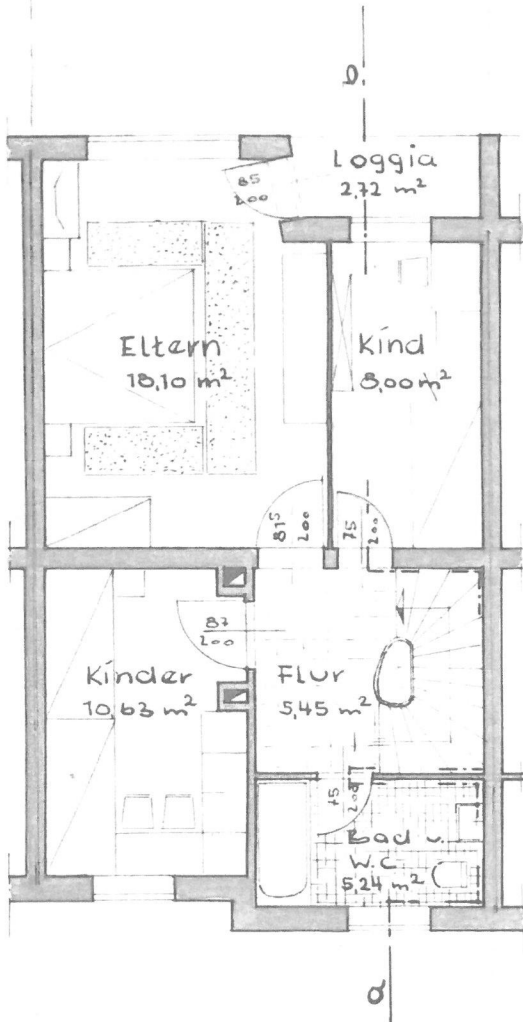
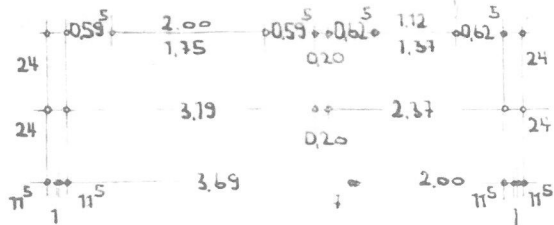


CILFI001254

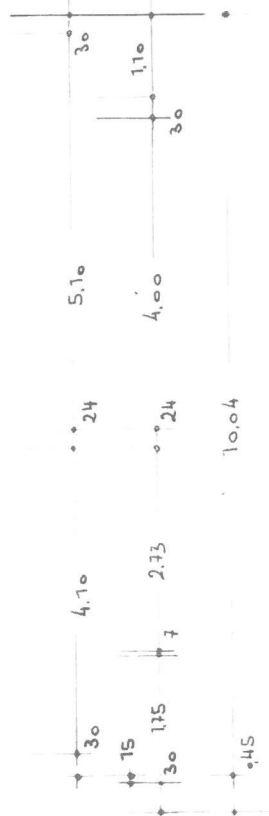
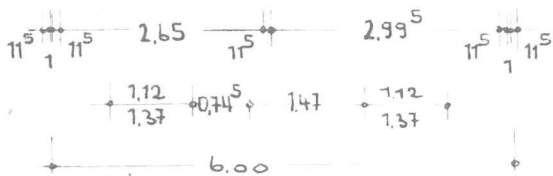


Erdgeschoss





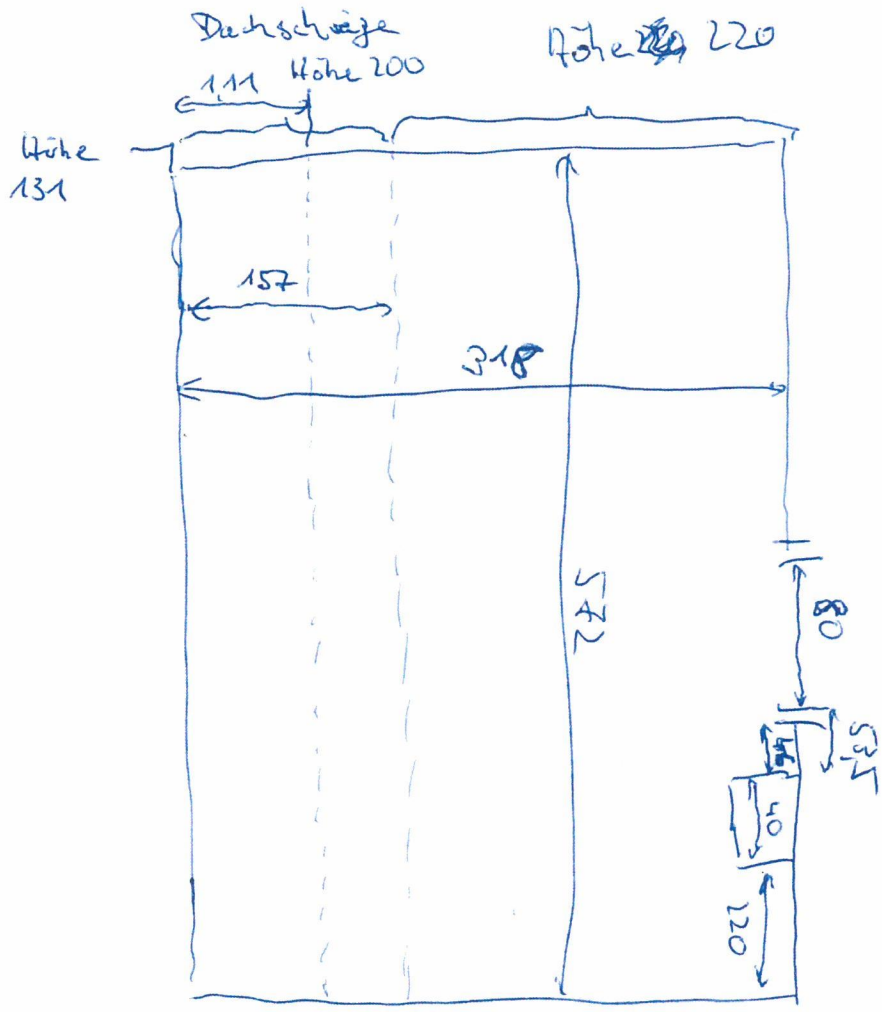
1. Obergeschoss



Bauherr =

Architekt =

GEBR. HÖLTL o. H.  
 Bau-Unternehmung  
 Augsburg-Hausstetten  
 Hesse Straße 8-9 Tel. 343R



Höhe 2,00 ~~9,22m~~  
 Höhe < 2,0 ~~6,35m~~  
~~15,56m~~

Höhe ≥ 2,00 m:  
 $(3,18 - 1,11) \times 5,72 = 11,8$

Höhe 1,0 - 2,00 m:  
 $1,11 \times 5,72 = 6,35/2$   
 $= 3,18$

Schacht:  
 $0,40 \times 0,20 = 0,08$

⇒ Fläche 2,06  
 $11,84 + 6,35 - 0,08 = 18,11$   
14,96m

Türinnenhöhe 1,91